

FUNDICIÓN CHILCA S.A.



fucsa

A large, white, curved steel casting is being moved by a crane in a factory. The casting is suspended from a metal frame and is being lowered into a pool of molten metal. The background shows industrial machinery and pipes. The text "We are proud to offer high quality steel and iron products" is overlaid on the image.

**We are proud to
offer high quality
steel and iron products**

We are
**FUNDICIÓN
CHILCA S.A.**

**INNOVATION
QUALITY
SERVICE
EFFICIENCY**

We are a modern steel & iron foundry with last generation equipment and an experienced work force and management team. We make Large-Ton and special steel parts in optimal times without reducing efficiency.

MISSION

Our priority is to manufacture the best quality parts in the shortest delivery time. Safely, efficiently and with state-of-the-art technology

VISION

To be the leading company for high tonnage iron and steel parts, becoming the benchmark foundry in the region and in the global market, permanently improving our value offer for our clients, employees, community and shareholders.

ISO 9001:2015
BUREAU VERITAS
Certification



fucsa

A large industrial steel wheel is the central focus of the image. It has a thick rim and several spokes. A welder, wearing a protective mask and gear, is working on the rim of the wheel. Bright sparks are flying from the welding point. The background shows the interior of a large industrial facility with a high ceiling and structural beams. The lighting is dramatic, with strong highlights and deep shadows. There are yellow and red geometric shapes in the top left corner of the image.

Why dealing with FUCSA ?

Our cutting edge production processes, the most modern steel foundry in Peru and one of the most modern in the region; our obsession with quality at every stage of the production process supported by technology. We help you achieve more, strengthening your equipment so that you may grow your business further.

The background is a collage of industrial images. The main image shows a large industrial facility with workers in white protective suits and red hard hats. In the foreground, there is a large, glowing orange molten metal ladle. The image is overlaid with several large, semi-transparent geometric shapes in red, yellow, and grey.

THE MOST MODERN METAL CASTING COMPANY IN PERU



fucsa

YOU CAN TRUST

Sales and Engineer Advice

Our team of engineers and specialized technical staff enables us to provide sound advice to our clients on the properties of casting, proposing different metallurgical combinations depending on features expected.

We design based on the needs of our client, constant review and optimization guarantee the high quality of our products.

Engineering at your disposal for your business to flow, always on time.

QUALITY PROCESSES AND TECHNOLOGY

Demanding international quality standards. The “know-how” of our engineers and highly qualified personnel offer right the technical support for your business.

Our control of the production process simulates and analyzes pouring, solidification and cooling in order to achieve the best quality in casting.

We control quality at each stage of the production process and have a laboratory equipped with the technology to withstand demanding revisions.

We provide efficient solutions to our clients using 3D scanner technology and software optimizing each part profile, improving the performance from the design to guarantee a high quality parts.



WHERE WE ARE?

Wherever our client need us. Be it coast, highland or jungle, we are at your service.

STRATEGICALLY LOCATED, WE OFFER INTERNATIONALLY FOCUSED LOCAL SERVICE

We are strategically located in the District of Chilca, 62 Km South of Lima and near to the main coastal highway, Panamericana Sur.

Our facility is in a 140,000 mts 2 plot of land with Electric Induction Furnaces, Sand Treatment System, Automated Molding Line, Thermal Heat Treatment, Finishing Equipment, Machine Shop, full Laboratory and full Control Center, all of wich help us optimize quality and finishing of our products.

LOW ENVIRONMENTAL IMPACT AND HIGH SOCIAL IMPACT

We encourage responsible and ecologically sustainable casting. We are committed to our employees, clients and the community.

Consistent wit this philosophy, we carry out our operations under current legislation ever improving and reviewing our production and quality processes.

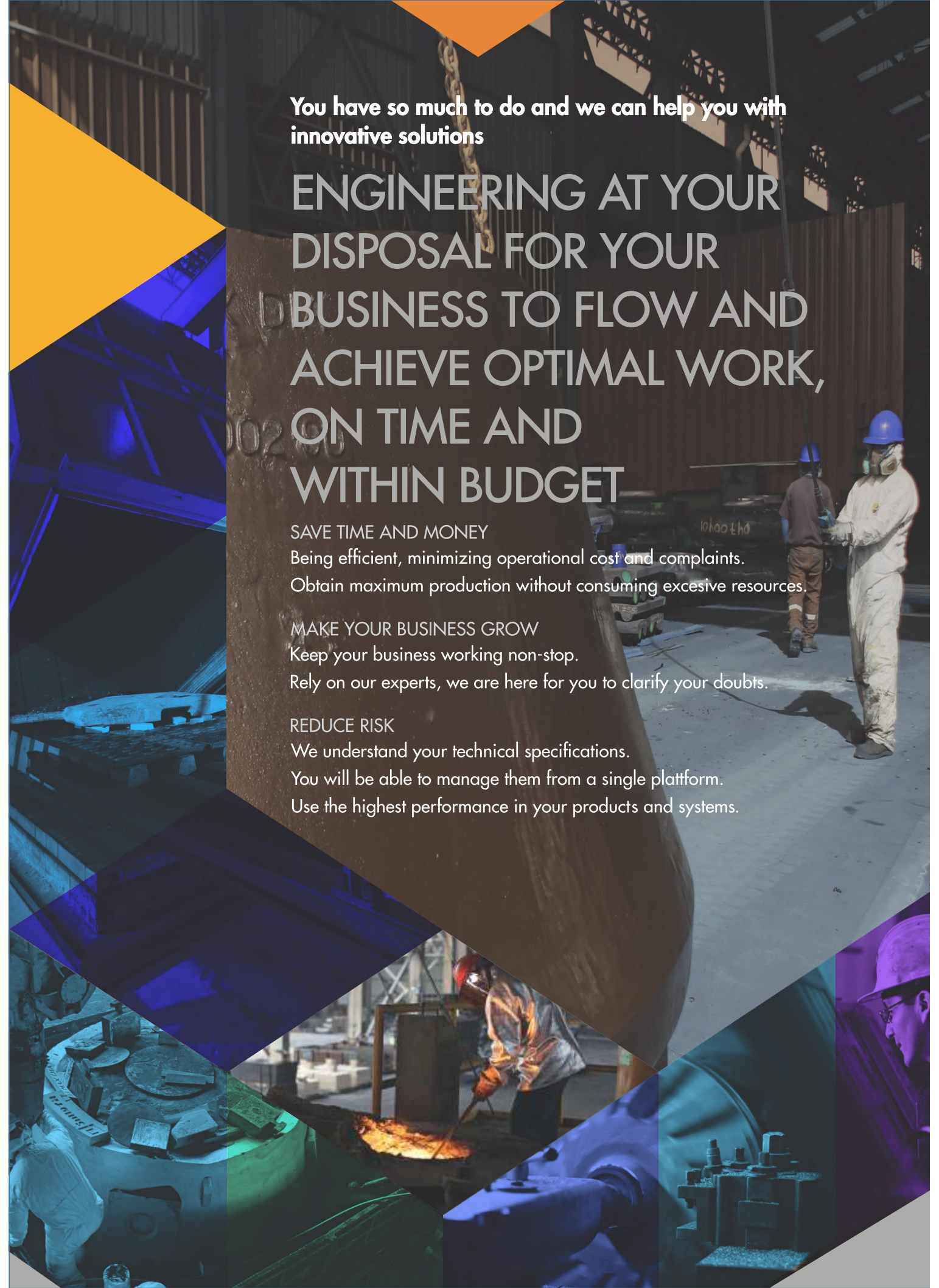
SAVE ENERGY WITH THE EXPERTS. THE NEW ENERGETIC ARCHITECTURE SAVES RESOURCES

We strongly believe that health, safety and good practice are and must always be compatible with a healthy and sustainable economy. Energy saving.



fucsa





You have so much to do and we can help you with
innovative solutions

ENGINEERING AT YOUR DISPOSAL FOR YOUR BUSINESS TO FLOW AND ACHIEVE OPTIMAL WORK, ON TIME AND WITHIN BUDGET

SAVE TIME AND MONEY

Being efficient, minimizing operational cost and complaints.
Obtain maximum production without consuming excessive resources.

MAKE YOUR BUSINESS GROW

Keep your business working non-stop.
Rely on our experts, we are here for you to clarify your doubts.

REDUCE RISK

We understand your technical specifications.
You will be able to manage them from a single platform.
Use the highest performance in your products and systems.

CRUSHERS



CRUSHER

fucsa
FUNDICIÓN CHILCA S.A.

We design and manufacture mainly in manganese steel for high performance under severe impact and high abrasion working conditions.

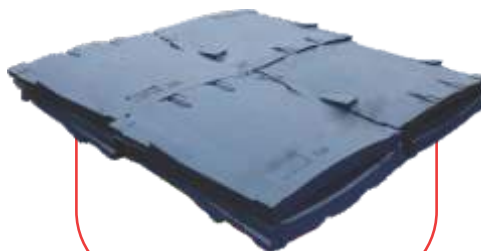
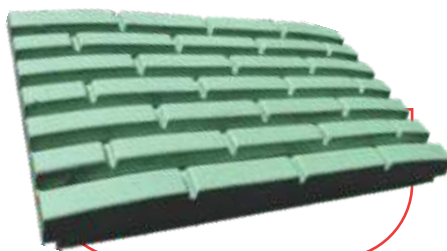
PARTS OF UP TO 20TM

Have developed alloys in this application that allow a efficient process.

PRIMARY GYRATORY CRUSHER

Lower Mantle
Middle Mantle
Upper Mantle
Concaves





fucsa
FUNDICIÓN CHILCA S.A.

SECONDARY & TERTIARY CRUSHER
Bowl & Mantle

JAW CRUSHER
Fixed & Movable Jaw Plates
Toggle Plates
Pitmann
Side Plates

HAMMER CRUSHER
Hammers and other



SAG & BALL MILL LINERS AND GRATES



MILL LINERS

fucsa
FUNDICIÓN CHILCA S.A.

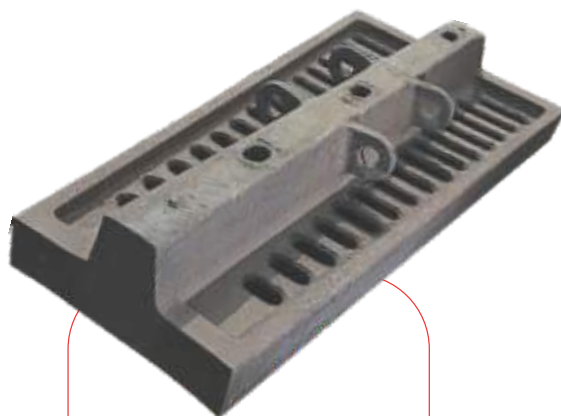
MILL LINERS AND GRATES

We manufacture chrome moly steel Liners / Grates for SAG mills.

And Chrome Steel / High Chrome Liners for balls / Rod Mills.

This alloy give the liner high properties of resistance to abrasion and to medium impact.





fucsa
FUNDICIÓN CHILCA S.A.

SEMI-AUTOGENOUS MILL
LINING (S.A.G.) GRATES

Ball Mill and Rod Mill Liners

Mill Parts



SLURRY PUMPS

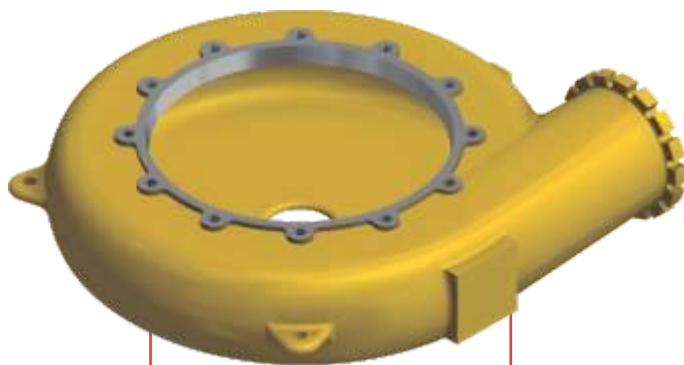
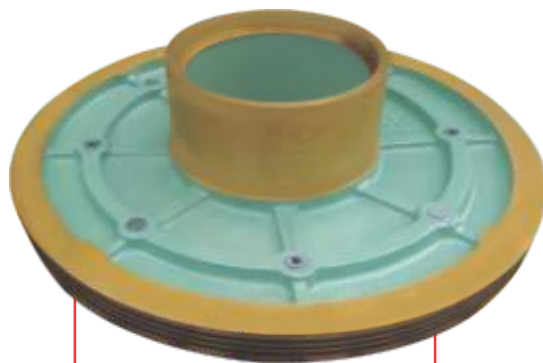
SLURRY PUMPS



fucsa
FUNDICIÓN CHILCA S.A.

Pumps parts produced in High Chrome White Iron,
Hardness in beyond to 700 HB.

Alloys with excellent properties of resistance to abrasion,
erosion and corrosion.



fucsa
FUNDICIÓN CHILCA S.A.

Shell
Volute
Impeller
Suction Liner
Frame Plate Liner
Others



STRUCTURAL AND WEAR PARTS FOR THE AGROINDUSTRY CEMENT, AGGREGATE & MINING INDUSTRIES



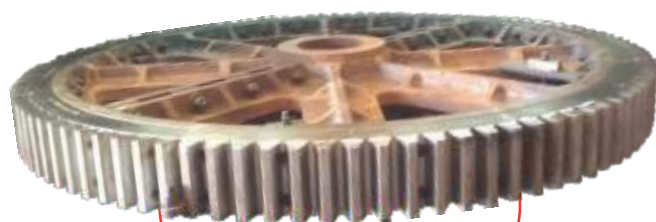
fucsa
FUNDICIÓN CHILCA S.A.

Parts for Sugar Mills manufactured in low carbon steels and Gray iron which ensure their quality and durability of equipment.

These parts work under mechanical stress, vibration and corrosion conditions.

Crown Pinion
Pinion - Gear
Mill Rollers
Trash Plate
Square Coupling
Among others





fucsa
FUNDICIÓN CHILCA S.A.

FUCSA can produce high resistant parts that work under impact, corrosion, abrasion and wear condition.

Spout feeder, Pan feeder, Chute liner, Conveyor chain links, Cooling racks, Selector furnace mouths, Mill liners, Hammers, Among others.

Structural and wear parts for Cement and Aggregate Industry. Dredges mining Coal Pulverizers, Vertimill Liners. Others Mining.



HEAVY EQUIPMENT / HEAVY MACHINERY

HEAVY EQUIPMENT HEAVY MACHINERY



fucsa
FUNDICIÓN CHILCA S.A.

We manufacture castings un Manganese steels or other alloys requiered for earth moving equipment in mining sector, such as Electric Rope Shovels & Draglines.

These parts have outstanding properties that successfully withstand large mechanical combined stresses.



fucsa
FUNDICIÓN CHILCA S.A.

Crawler Shoes
Rollers, Idler
Racks
Latch Keeper

POST SALE SERVICE

UT and laser scanner monitoring life wear prediction and proposals for improvements in the parts we supply.
Simulation of the process using DEM and FEM softwares.

ALWAYS ON TIME
THE SERVICE MAKE
THE DIFFERENCE

TECHNICAL ASSISTANCE &
QUALITY CONTROL



fucsa

FUNDICIÓN CHILCA S.A.



MATERIAL	FUCSA CODE	REFERENCES ASTM	MECHANICAL PROPERTIES					APPLICATIONS	MACHINABILITY	WELDABILITY	
			Tensile Strength , Min		Yield Strength, Min	Elongation	R.A				Hardness
			Lbs/pulg ²	MPa							
LOW CARBON STEEL ALLOY	AC-1	A-27-70-40	70000 80000	413 482	40000 45000	275 310	22 24	40 45	Cone Crusher Heads, Sprockets, Trunnions, Crusher Main Frame, Support for Sugar Mill	Excellent	Excellent
	AC-2	A-148GR-80-50	80000 90000	550 619	50000 60000	345 413	20 24	35 40	Sugar Mill Trash Plates, Disk for Hammer Mill, Tracks and Gears for Mill and Rotary Dryers	Excellent	Excellent
	AC-3	A-148GR-90-50	90000 100000	620 690	60000 80000	413 552	18 22	30 32	Gears and parts of machinery in general that work under medium stress	Excellent	Excellent
	AC-4	A-148GR-105-85	105000 115000	725 800	85000 90000	585 600	15 18	30 32	Sprockets, gears, parts of machines and structural parts that require elevated mechanical properties	Excellent	Pre - Heating
	AC-4E	A-487-AB	120000 150000	827 1035	90000 100000	620 689	10 15	15 20	Sprockets, gears and parts of machines that require elevated mechanical properties	Good	Pre - Heating
AUSTENITIC MANGANESE STEEL	MM-1	A-128-E1	120000 130000	827 896	55000 65000	379 448	30 40	25 30	Crawler Shoes, Roller Idlers, Gyrotary Primary Crusher Mantles and concaves for general operation conditions	Good	Good, Low Amperage Not Heating
	MM-2	A-128-B3	110000 120000	758 827	50000 60000	345 483	30 40	25 30	Cone Crusher Bowl liner and mantles, Gyrotary Primary Crusher Mantles and concaves, for medium operation demand	Good	Good, Low Amperage Not Heating
	MM-3	A-128-C	120000 130000	827 896	55000 65000	379 448	30 40	25 30	Jaw Crusher, Wedges, Zippers, Cone Crusher Bowl Liner/Mantle, Mill Liners, and parts in general subjected to medium impact and high abrasion	Good	Good, Low Amperage Not Heating
	MM-4	A-128	120000 130000	827 896	55000 65000	379 448	30 40	25 30	Cone Crusher Bowl liner and mantles, and parts in general subjected to impact and high abrasion not greater than 4" thickness	Good	Good, Low Amperage Not Heating
	MM-5	1.8% Mn	120000 130000	827 896	60000 65000	483 448	25 30	20 25	Cone Crusher Bowl liner and mantles, Gyrotary Primary Crusher Mantles and concaves, for high operation demand (High Performance)	Good	Good, Low Amperage Not Heating
CHROME - MOLY STEEL	MM-6	22% Mn	130000 140000	896 965	65000 70000	448 483	20 30	20 25	Cone Crusher Bowl liner and mantles, Gyrotary Primary Crusher Mantles and concaves, for high operation demand (Top High Performance)	Good	Good, Low Amperage Not Heating
	CM-1	A-148-GR-120-100	120000 140000	827 965					Grates for SAG Mill, Wear Plates, parts in general subjected to abrasion and impact	Acceptable	Bad
	CM-2	A-148-GR-140-120	140000 160000	965 1103					SAG Mill Liners and Grates	Acceptable	Bad
	CM-3	A-148-GR-180-160	160000 180000	1103 1241					Ball Mill Liners and Concaves	Acceptable	Bad
	CM-3E	A-148-GR-180-160	140000 160000	965 1106					Large SAG and Ball Mill Liners and Concaves	Acceptable	Bad
HIGH RESISTANCE STEEL	AR-1	A-217 - WC-4	140000 180000	965 1241	80000 100000	552 690	8 12		Parts submitted to severe mechanical stress	Good	Requires special procedure
	AR-2	A-217 - WC-5	190000 220000	1310 1517	115000 130000	793 896	6 8		Mill Liners, Hammers, Middle and Upper Concave	Regular	Requires special procedure
	AR-3	A-958-SC 8630	125000 140000	860 965	105000 115000	725 790	10 max.	20 max.	Parts submitted to severe mechanical stress	Good	Requires special procedure
CORROSION RESISTING STEEL	AI-1		65000 75000	448 516	35000 40000	240 275	25		Parts subject to corrosion	Good	Good
HEAT RESISTENT STEEL	RF-1	A-297-HK	70000 80000	482 552	40000 50000	275 345			Parts that work under high temperatures and corrosion condition	Acceptable	Low Amperage
	RF-2	A-297-HH	70000 80000	482 552	40000 50000	275 345			Parts that work under high temperatures and corrosion condition	Acceptable	Low Amperage
NI HARD	NH-1	A-532 - IA							Mill Liners, Wear Plates . Maintains its hardness in temperatures higher than 500 ° C	Bad, only to Esmeril	Not weldable
	NH-2	A-532 - ID							Mill Liners, Parts for Slurry Pumps. Maintains its hardness in temperatures higher than 500 ° C	Bad, only to Esmeril	Not weldable
	HB-1	ASTM-532 II-A							Mill Liners for the cement industry, Concaves and Ball Mill Liners	Bad, only to Esmeril	Not weldable
	HB-2	ASTM-532 II-B							Wear Plates with hardness 600 - 700 BHN, Mill Liners	Bad, only to Esmeril	Not weldable
	HB-3	ASTM-532 II-D							Mill Liners, Wear Plates	Bad, only to Esmeril	Not weldable
	HB-4	ASTM-532 II-D							Mill Liners with thickness greater than 6 " , Wear Plates	Bad, only to Esmeril	Not weldable
	HB-5	ASTM-532 II-D							Concaves for Primary Crusher with thicknesses of up to 10 "	Bad, only to Esmeril	Not weldable
HIGH ALLOY CHROME MOLYBDENUM	HB-6	ASTM-532 III-A							Wear Plates that work under severe abrasion and corrosion condition. The % Cr reduces corrosion wear , Shell , Suction Plate , Motor Plate , Impeller for Slurry Pumps, Impeller for	Bad, only to Esmeril	Not weldable
	HB-7	ASTM-532 III-A							Parts that work under severe abrasion and corrosion condition. The % Cr reduces corrosion wear , Shell , Suction Plate , Motor Plate , Impeller for Slurry Pumps.	Bad, only to Esmeril	Not weldable
GRAY IRON	HG-1	A-48 class 40	40000 45000	275 310	-	-			Parts that work under mechanical stress, Trunnions Part that work under pressure condition, Valves	Good	Not Recommended
	HG-2	A-48 class 20	20000 25000	138 172	-	-			Parts that work under vibration and thermal shock conditions	Good	Not Recommended
DUCTILE IRON	HN-1	A-536-65-45-12	minimum 65000	min, 447	min, 45000	min, 310	12		Parts that work under high mechanical stress, corrosion high pressure and temperature conditions	Good	Not Recommended



VARIETY OF
HIGH QUALITY
ITEMS TIMELY
DELIVERED



www.fucsa.pe

GIVE US A TRY

Offices & Plant Phone
(511) 3216999

www.fucsa.pe

OFFICES

544 Francisco Masias Street, 14th floor
San Isidro, Lima 27. Peru

PLANT

Santo Domingo de los Olleros Ave.
Chilca, Cañete. Peru
(62 km. Panamericana Sur)

Offices & Plant Phone
(511) 321.6999



fucsa